



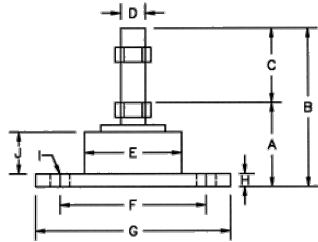
1967 Rochester Industrial Dr,
Rochester Hills, MI
48309

Phone: 248-650-0603

www.busingsinc.com

SELECTING VIBRO-LEVELER MACHINE MOUNTS

While a typical installation requires four Vibro-Levelers, any number may be used to accommodate machinery requiring more (or fewer) points of suspension. Once the total weight of the machine is established, refer to the accompanying specification table to determine the correct mounting number(s) based on their weight bearing capacities. The combined capacity of the number of mountings should equal or exceed the total weight of the machine to be supported.



Mount Number	Load Capacity of Each Mounting (lbs)	Shipping Weight Each	Average Deflection Under Rated Load	A Height Floor To Top of Nut Min. Ht Above Floor	B Height (O.A) Mount Inc'l Stud	C Height of Stud Above Lower Nut	D Ø Stud	E Ø Housing	F Bolt Hole Centers	G Ø Base	H Flange Height	I Ø Bolt Holes in Base	J Height of Body Above Flange
3010	10	5 oz.	0.0625"	1 1/8"	2 1/8"	1"	5/16"	1 1/4"	1 7/8"	2 1/2"	11/64"	1/4"	9/16"
3025	25	7 oz.	0.0625"	1 5/8"	2 3/4"	1"	3/8"	1 1/4"	1 7/8"	2 1/2"	11/64"	1/4"	1"
3050	50	7 oz.	0.0625"	1 5/8"	2 3/4"	1"	3/8"	1 1/4"	1 7/8"	2 1/2"	11/64"	1/4"	1"
3100	100	10 oz.	0.0625"	1 3/4"	3"	1 1/8"	3/8"	1 1/2"	2 7/16"	3"	11/64"	5/16"	1 1/8"
3200	200	11lb 6 oz.	0.0625"	2 1/4"	3 3/4"	1 3/8"	1/2"	1 7/8"	2 3/4"	3 1/2"	3/16"	3/8"	1 1/2"
3300	300	11lb 14 oz.	0.0625"	2 3/4"	4 3/4"	2"	1/2"	2"	3"	4"	3/16"	3/8"	2"
3500	500	11lb 10 oz.	0.0625"	3 1/2"	6"	2 1/2"	1/2"	2 1/8"	3 1/2"	4 1/2"	3/16"	3/8"	2 3/4"
3750	750	9lbs	0.0625"	5"	8 5/8"	4"	1"	4 1/2"	6 1/2"	7 3/4"	3/8"	5/8"	3"
4000	1000	9lbs	0.0625"	5"	8 5/8"	4"	1"	4 1/2"	6 1/2"	7 3/4"	3/8"	5/8"	3"